

Rosefield Solar Farm is a proposed new solar farm with battery storage in Buckinghamshire. It would provide enough clean energy to power around 57,000 homes* and save more than 125,000 tonnes of carbon dioxide emissions every year.**

Rosefield Solar Farm is backed by EDF Renewables UK and PS Renewables, two companies with a long history in helping meet the country's need for renewable energy.

We are currently at a very early stage in preparing our plans for Rosefield Solar Farm and community input will be vital in helping shape our proposals.

* Based upon the average domestic electricity consumption per home (temperature corrected) per the Energy Consumption in the UK (published September 2021, Table C9 of ECUK: Consumption data tables)

** Based upon BEIS's "all fossil fuels" emissions statistic of 450 tonnes of carbon dioxide per GWh of electricity supplied in the Digest of UK Energy Statistics (published 2021)

Location plan

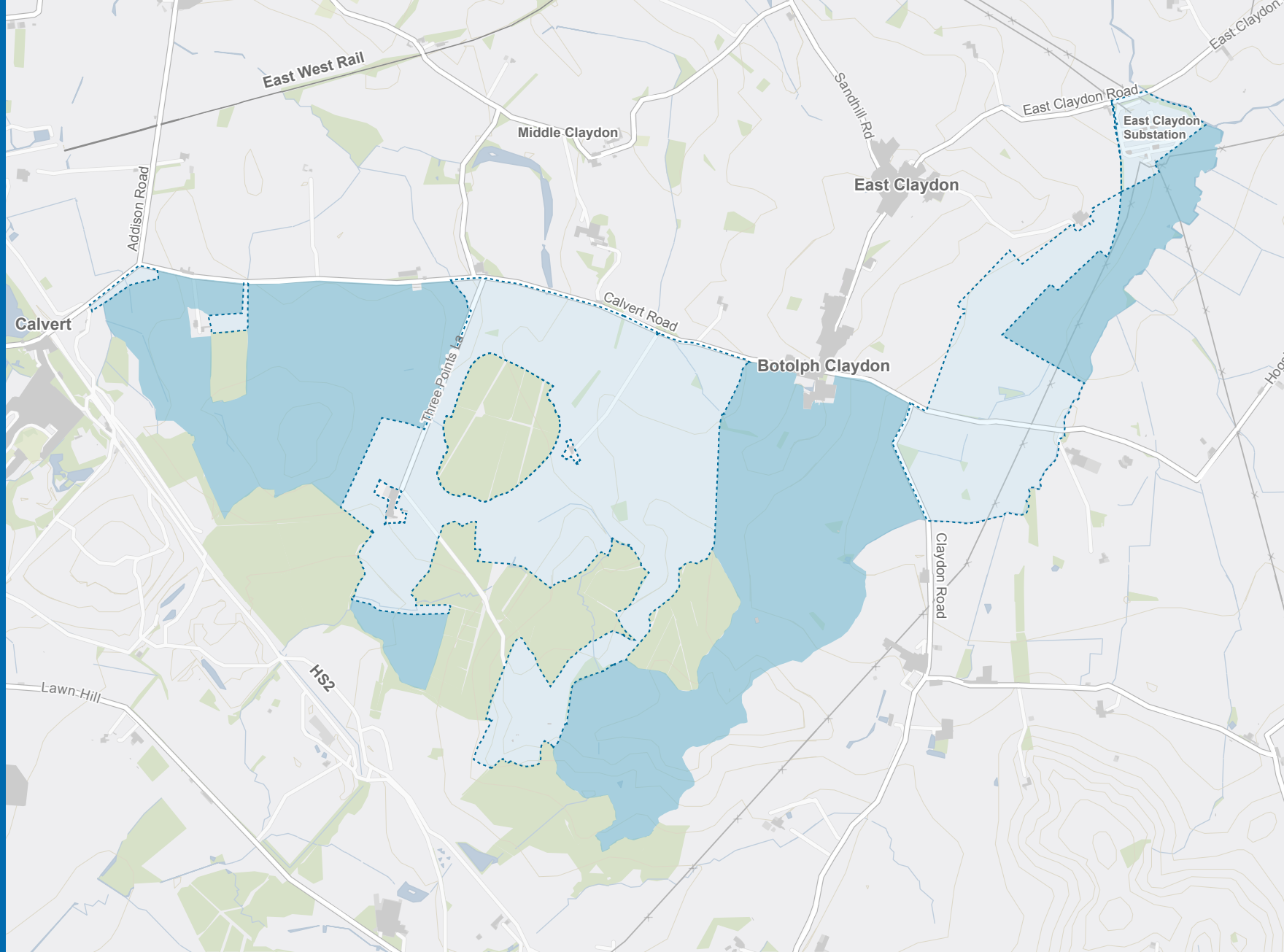
The plan on this page shows the area we are considering for Rosefield Solar Farm.


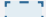


We expect to use only around half of the site for energy generation and storage.

We will also be looking for opportunities to boost biodiversity and provide environmental mitigation, such as planting new habitats to support local wildlife.

In other areas, we are working to find the most appropriate locations for the underground cabling that will connect the site to the grid. We will also use some of these areas temporarily during construction.

We will share more information about Rosefield Solar Farm, including our early design, during our consultation which will start on Thursday, 28 September 2023.



-  Potential area for solar, battery, ecological enhancements and setbacks
-  Potential area for underground cable routes, access tracks and temporary construction compounds (locations to be determined)
-  Existing woodland
-  Existing power lines

Working with local landowners

The land is predominantly owned by Claydon Estate. Rosefield Solar Farm will play an important role in supporting the estate's vision for a sustainable future.

Next steps

Consultation will start on Thursday, 28 September 2023 and include more details about the Rosefield Solar Farm site, our design process, how we plan to assess potential environmental effects, and the benefits to the community that our proposals could bring.

All of the consultation information will be on our website, and we will also hold a series of public events where you can talk to us about the proposals and give us your feedback. The dates and locations are:

Wednesday, 4 October 2023 (2:30pm - 6:30pm)

Calvert Green Village Hall
and Brickworx Bar
Cotswolds Way, Calvert
Buckingham MK18 2FJ

Friday, 6 October 2023 (2pm - 6pm)

Quainton Memorial Hall
Station Road, Quainton
Aylesbury HP22 4BW

Saturday, 7 October 2023 (10am - 2pm)

East and Botolph Claydon Village Hall
Botyl Road
Botolph Claydon
Buckingham MK18 2LR

Monday, 9 October 2023 (10am - 2pm)

Steeple Claydon Village Hall
Queen Catherine Road
Steeple Claydon
Buckingham MK18 2PY

Planning process

Rosefield Solar Farm would make an important contribution to increasing Britain's clean energy capacity and meeting the government's target of net zero carbon emissions by 2050.

The size of this development means we will apply for a type of planning consent called a Development Consent Order (DCO), which is decided by the government. Consultation forms a key part of the DCO process, both before we submit the application and as part of the examination process. For more information about the planning process, visit the Planning Inspectorate website:

infrastructure.planninginspectorate.gov.uk/

Get in touch

For further information, please contact us on **0800 8611097**
or info@rosefieldsolarfarm.co.uk

You can also visit our website, rosefieldsolarfarm.co.uk, for updates throughout the process.